

# NED - your experienced partner

for building Microsoft SharePoint Server based applications

Being certified expert in building custom SharePoint based applications NED can help you taking your portal in better use. We know how to maximize value of your SharePoint portal and are ready to become your trusted partner in developing advanced publishing, collaboration and business intelligence solutions. Learn more about our way of working below.

## ■ SharePoint Office Server today

Lately, many organizations have started building their corporate communication and collaboration solutions on top of Microsoft Office SharePoint Server 2007. Indeed, MOSS offers a variety of useful features for creating scalable public web services as well as intra- and extranet sites. Among those are powerful search engine, rich content and document management capabilities, advanced publishing options, strong user group and access control management, forums, wikis, blogs, event calendar, etc. Add here seamless integration with Active Directory and other Microsoft tools, built-in support of SSO, connectivity to almost any business data storages and you get an extremely powerful platform that supports your marketing communication and streamlines internal and external collaboration.

## ■ Increasing business value of SharePoint

However, large international surveys indicate that most organizations that have purchased quite expensive MOSS licenses often use very limited functionality. Set of features that is most extensively used by companies is mostly limited to document management as well as content management and publishing options. According to surveys, two main reasons for such an inefficient use are poor user interface of MOSS 2007, not intuitive enough to be offered for wide use within organizations, and high cost of development projects provided by external consultants. The first problem is finally tackled by Microsoft itself with soon to be published SharePoint Server 2010, whereas NED is offering a cost-effective solution for the latter one.

BUSINESS USER EXPERIENCE



BUSINESS COLLABORATION PLATFORM

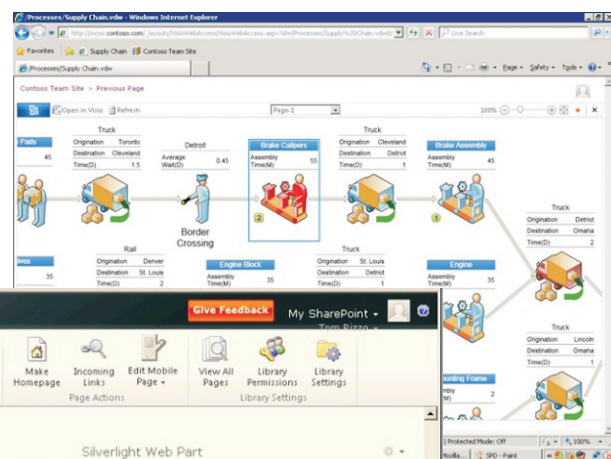


DATA INFRASTRUCTURE & BUSINESS INTELLIGENCE PLATFORM



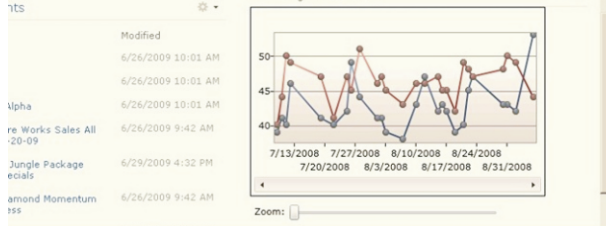
### Business Productivity Infrastructure

- Dashboards & Scorecards
- Excel Services
- Web based forms & workflow
- Collaboration
- Search
- Content Management
- LOB data integration
- PowerPivot for SharePoint



The Microsoft BI Solution Stack

Visio workflow functionality and Silverlight web parts become available in SharePoint 2010



## ■ MSS 2010 – towards a Business Intelligence platform

With upcoming release of MSS 2010 Microsoft is taking a strong step towards providing a complete package for enterprise management. New features introduced in MSS 2010 include powerful reporting and business intelligence options, performance management capabilities, workflow management functionality, smooth connectivity to external databases and applications, enriched presentation and visualization options, online surveys as well as

improved offline workspace options. Combined with much better usability of Office like interface, enhanced administration, editing and design features, as well as advanced architecture and data security, MSS 2010 covers quite broad scope of business needs, providing easily accessible management and control tools for top managers including marketing, sales, corporate communications, HR, etc.

**NED**  
software consulting

**Microsoft**  
GOLD CERTIFIED  
Partner

Portals and Collaboration  
Business Intelligence Platform  
Custom Development Solutions

We know how to maximize value of your SharePoint portal

## ■ Custom SharePoint applications

Using out-of-the-box features of MSS 2010 may not be enough for building efficient solutions for your everyday needs. That's why SharePoint provides great opportunities for developing customized applications on top of the standard platform. These applications can be integrated with your SharePoint portal using custom web parts and web services. The only thing you need for extending functionality of the portal is a dedicated development partner that has deep technical expertise in SharePoint platform as well as broad experience with building custom SharePoint applications. Moreover, if this partner is able to provide services in a cost-effective way, what else can one expect in order to increase ROI?

## ■ NED's expertise with SharePoint Server

NED has been developing SharePoint applications since very first versions, starting with SharePoint Portal Server 2003 and Microsoft Content Management Server, and since August 2007 having extensive hands-on practice with MOSS 2007. Currently, we've got about twenty experienced SharePoint consultants in house, whose joint experience with the platform exceeds thirty men-years. Our code is running behind a large number of widely known public services and corporate applications of well-known companies and organizations. Our MOSS team includes the first Microsoft Certified Master for SharePoint in Scandinavia, who works outside of Microsoft's own organization. Thanks to our proven expertise, NED's consultants have been invited to provide both MOSS 2007 and MSS 2010 trainings for large system integrators in Finland.

## ■ Get more out of your SharePoint solution by using NED's support service

Have you ever thought of cost-efficiency of maintenance and support for your SharePoint portal? Do you feel like support of your current applications is not done in a most effective way? Not surprising at all, since best specialists are always involved in development projects, and even those often lack appropriate expertise. So support is usually provided by lowest level developers. In contrast, NED has strong experience in running cost-effective near-shore MOSS support team consisting of highly skilled consultants capable of providing expert level knowledge in a very cost-effective way.

### Case study: MOSS support team

#### Team:

1 senior team-lead,  
on-site in customer premises

3-5 senior consultants,  
remotely in NED's near-shore office

#### Responsibilities:

Communication with customer  
Requirement analysis and definition  
Tickets generation and distribution  
Workload management  
Quality assurance  
Reporting and documentation

Developing,  
bug fixing and testing according  
to tickets and tasks provided by on-site  
team-lead.

89 % of respondents evaluate NED's support services with 8 or 9 marks according to 1-9 scale\*. So why don't you maintain and further develop your portal functionality by using NED's support services! No matter, whether it's our own code or code of external service provider, we are able to perform its maintenance with quality and high efficiency.

\* Source of data: Customer Satisfaction Survey by Microsoft, December 2009

## ■ Project references

The short list of SharePoint based applications recently developed by our personnel includes:

- ▶ Complete internet/intranet/extranet system for large state funding organization;
- ▶ Development of variety of MOSS 2007 based solutions for large industrial corporations;
- ▶ MOSS 2007 <=> MS CRM integration for large public corporation;
- ▶ Custom tools for flexible migration of bulk document storages from SharePoint Portal Server 2003 to MOSS 2007;
- ▶ Integration of business process management solution (BPM) with MOSS 2007 for insurance company;
- ▶ MOSS 2007 based custom HR system for evaluation of personnel's performance of telecom vendor;
- ▶ SharePoint 2010 Beta based custom application for definition and classification of business processes of telecom vendor with support of Silverlight diagrams;
- ▶ MOSS 2007 based Collaborative Project Portfolio Management tool for organizing workgroup's communication around strategic projects of telecom vendor;
- ▶ MOSS 2007 based social network like collaborative environment for improving internal corporate communication, offered as SaaS;
- ▶ Custom single sign on (SSO) solutions that provide sophisticated user authentication in complex environments;
- ▶ Several pilot solutions based on SharePoint 2010 Beta.

## ■ Introducing collaboration into strategic projects

ShareProject is NED's own collaborative project management tool. It's designed for communication within the team working on a project that has less defined scope. Typical example of such a project is any strategic development initiative that neither has exact scope, nor defined time schedule and budget. It's a project that typically involves managers from different business units and often facilitated by external business consultant. There's no use for traditional project management software in such a case. Collaboration tools are needed instead in order to provide team with a flexible workspace that supports specific needs.

ShareProject is based on Microsoft SharePoint and is either deployed as add-on for customer's own portal or provided on SaaS model. It includes standard SharePoint functionality such as wiki, blogs, forum, event calendar, document library, contacts, etc. In addition, it provides a customized view on latest activities, which enables a quick overview of the project. Finally, an information dashboard that gathers brief information from all ongoing initiatives is available for top management.

Get more out of your SharePoint portal and make your strategic work truly collaborative!

“ We have been cooperating with NED for a long time and NED's services have enabled us to quickly respond to changing market situation. NED's resources have participated our projects in all possible roles related to software development, providing us with high level technical expertise. We are satisfied with our cooperation and will be continuing it in future. ”

Tommi Kovalainen  
Technical Project Manager  
Logica Finland